



SUCCESS STORY

Orthotech is a fully equipped digital dental laboratory in Malaysia, which provides both traditional crafted and digital CAD/CAM solutions to its clients across Asia. With their qualified in-house artisans, more than 30 years' experience in the field of professional dental restorations, and ties to partners in the America & Europe, Orthotech strives to deliver the finest and most cutting edge dental solutions to its clients.

“When we first started using GO2dental, almost immediately we could see differences in the way our machines responded to the strategies created by the software. The milling process was less aggressive, left cleaner cuts from our various materials, yet was still faster overall than anything we had worked with before.”*

Christopher Davies, CEO

Optimized your milling thanks to GO2dental

After having worked with several software solutions, Orthotech chose to use GO2dental.

“We came to know about GO2dental, a small yet very focused division of GO2CAM International, a renowned French company in the field of automotive CAM. After contacting their technical experts, we were instantly offered the chance to try their software free of charge with no questions asked. We were not extended

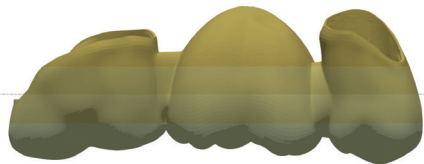
quite the same courtesy from other vendors.”



* Orthotech uses a DWX-50 (Roland)

A customized solution and technical support

“ *Right from the start, we have had unbelievable technical support from the team at GO2dental, a crucial support factor when running a business where each design is custom and the manufacturing process is very individualized. Each element is different and this can sometimes pose various production issues. The team at GO2dental has been able to help us resolve each and every one of those issues and within the same working day!* ”



Thanks to GO2dental, you can have your own strategies for some of the more detailed tools you use in your machines to achieve higher levels of details. By fully utilizing the features offered by GO2dental, you are able to produce dental crowns, bridges, veneers, copings, inlays, onlays, implant bars, custom implant, abutments and even zirconia posts for RCT cases where aesthetics are vital. These can all be milled in a wide variety of materials like zirconia, wax, PMMA and casting acrylic.

“They have even added intuitive functions which allow you to use multi-layered materials like PMMA or zirconia by adjusting the X, Y & Z axis positions, a feature offered only by a few vendors” adds Christopher Davies.



ORTHOTECH DENTAL LABORATORY

A-3-3 Vantage,
Jalan Desiran Tanjung,
10470 Tanjung Tokong,
Penang, Malaysia
www.orthotech.asia