

## GO2dental V6.03

GO2cam International's team keeps improving its CAM solution for dental lab to offer **an ever more easy-to-use working tool**.

GO2dental V6.03 aims to make every process **faster, simplified and more efficient**.

### FULLY AUTOMATIZED PROCESS

Whether for discs or pins, GO2dental brings automatization to another level and lets dental technicians focus on their value added job.

### IMPLANT INTERFACE

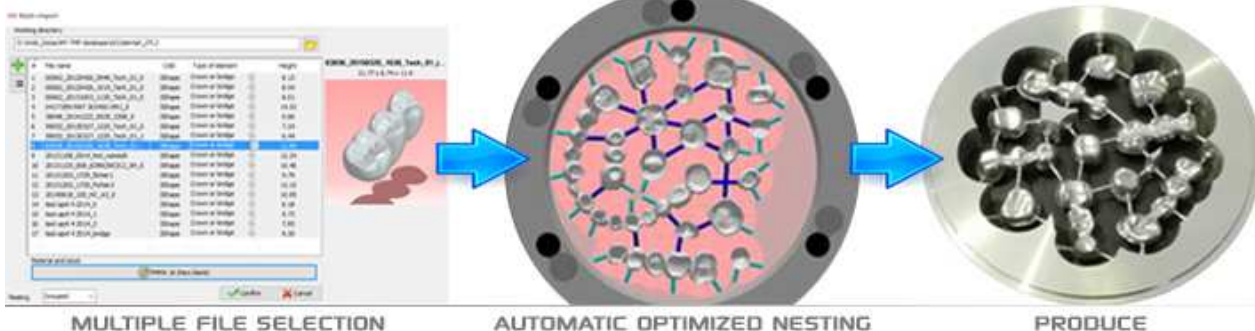
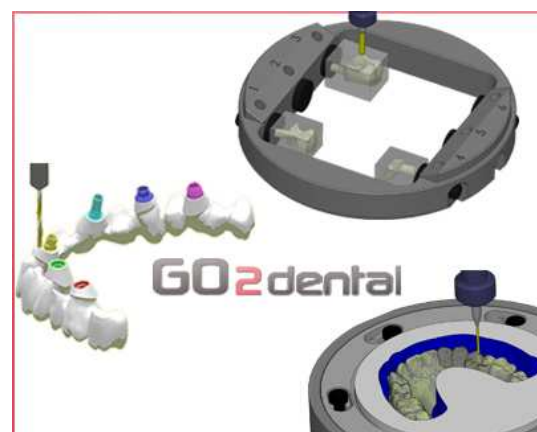
Based on real SOLID shape, it becomes very easy and faster to create and replace interface with GO2dental.

The full parametric models enable the user to create his data base with his dimensions.

### 64 BITS AND MULTI THREADING

It reduces the calculation time by using 64bits and multi threading technology.

Next step >>[this way](#)



### FULLY AUTOMATIZED PROCESS

Thanks to the fully automatized process, the user just has to **select several STL files** and the blank. GO2dental does the rest : **place the elements** in the discs or pins then **puts the sprues (connectors)** and **calculates the toolpaths**.

The NC File is then ready for you to run on your machine.

This innovation offers **more time and cost savings !**

[Video demonstration of the fully automatized process](#)

### GO2dental at DENTAL FORUM

GO2dental and its novelties will be demonstrated at DENTAL FORUM, the international dental tradeshow in Paris (France), from 7th to 9th March. You can find us in **Booth F181**.



### GO2dental at SINO-DENTAL

We will also attend SINO-DENTAL, the major Chinese dental tradeshow, from 9th to 12th June in Beijing. We would welcome you at our stand, **Booth N03/N04**.