

GO2dental

cam for dental labs

GO2dental v6.04

A new GO2dental!

Our R&D team at GO2cam International keeps striving to offer the best CAM solution for dental professionals.

GO2dental's latest version enables quicker and more efficient processes.... And is always super easy to use.

Maybe you already had the opportunity to know all about the new features at IDS in Cologne, but if you weren't there, keep reading!



The new features include...

MODEL MACHINING

This feature offers you the possibility to save time & money by producing your own models with your milling machine tool

ANGULATED SCREW CHANNEL MANAGEMENT

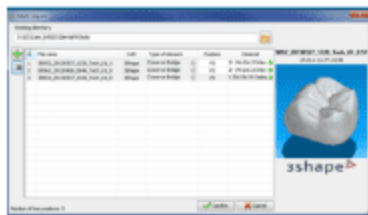
Automatic recognition of angulated holes for an optimal quality of your in-house implant production

PINS WITH HOLES FOR IMPLANT PRODUCTION

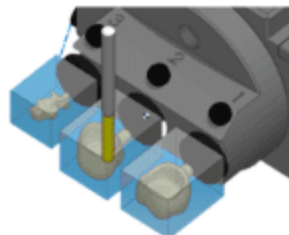
GO2dental's library now includes holes top produce TiBase implants

Also available: 5 axis simultaneous for drilling and tooth interior milling with a grinding tool, allowing flexible and efficient manufacturing

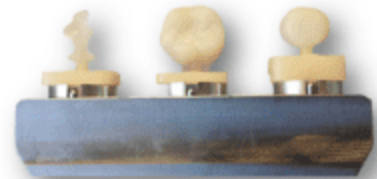
You can download our brochure here below :



1. import of multiple files



2. Automatic nesting



3. High quality production

Always super easy to use!



[Visit our Website](#)

Copyright © 2017 GO2cam International, All rights reserved.

Our mailing address is:
GO2cam International
120 avenue Jean Jaurès
Lyon 69007
France